

SEAWARD
OF GRAND BAHAMA



THE DRIFTWOOD
FRONT ELEVATION

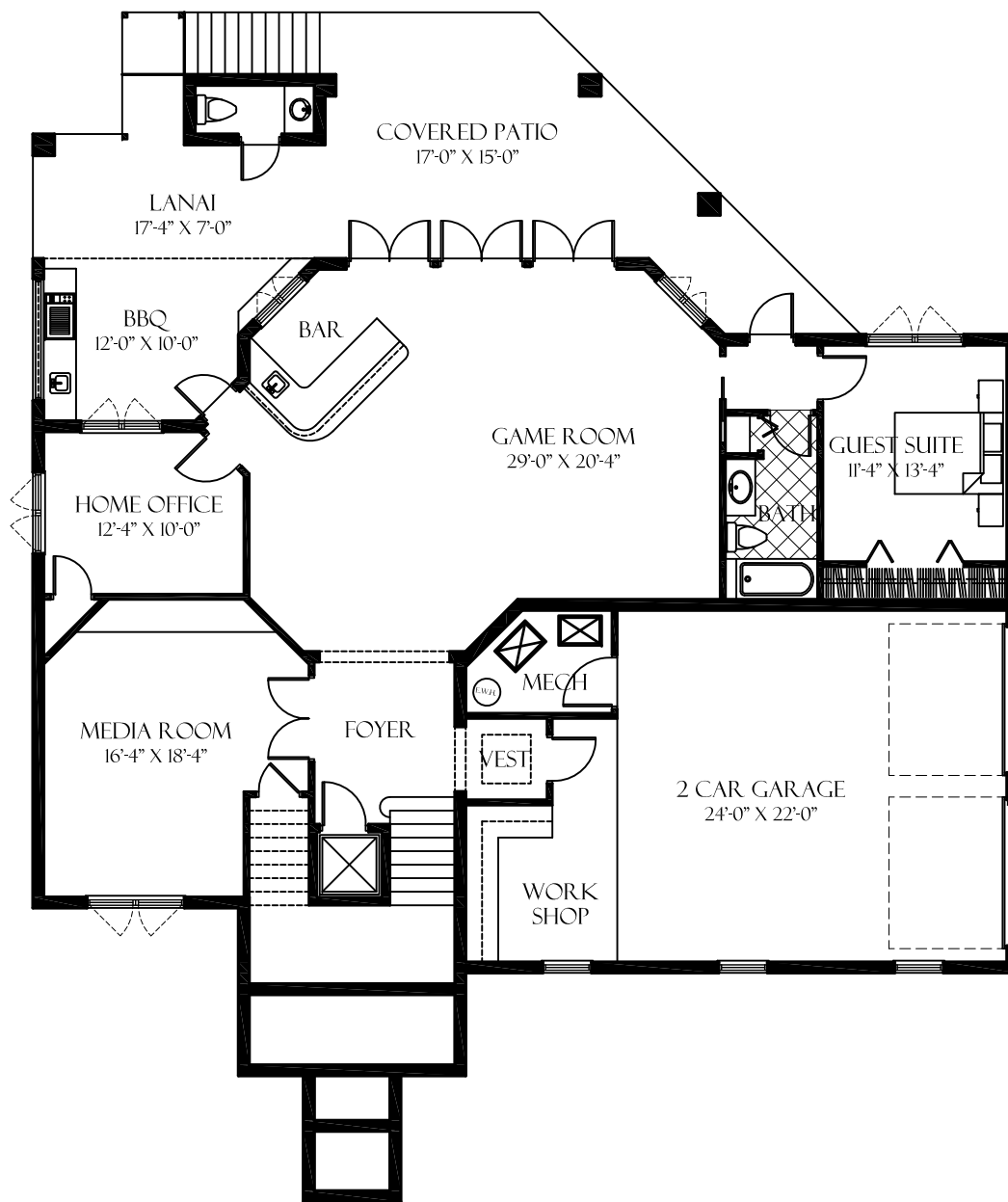
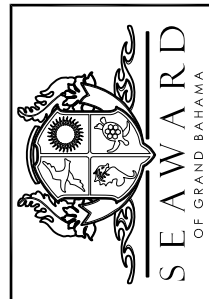
SCALE: 1/4" = 1'-0"

THIS ARCHITECTURAL
DRAWING PLUS ASSOCIATED
FLOORPLANS ARE TO BE
CONSIDERED AS PRELIMINARY
OR WORKING DRAFTS, AS
SUCH, ALL DIMENSIONS AND
SPECIFICATIONS ARE
APPROXIMATE AND SUBJECT
TO CHANGE OR WITHDRAWAL
WITHOUT NOTICE.

SHEET NO.

A-4

OF 4 SHEETS

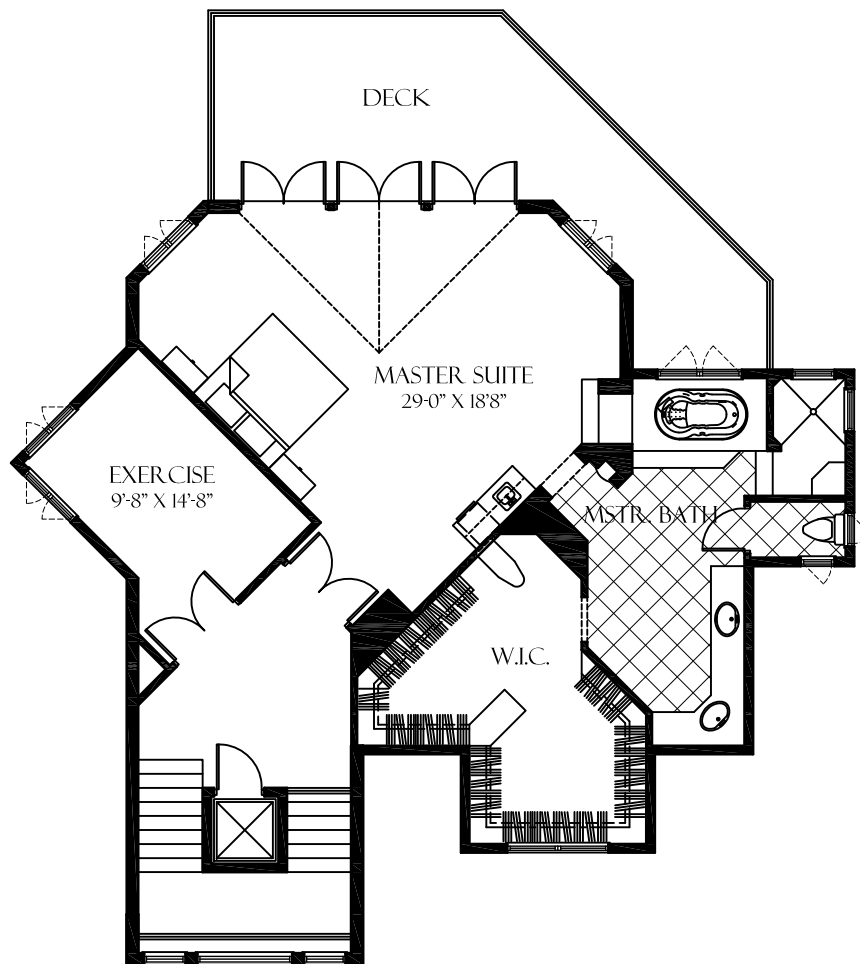


THE DRIFTWOOD
GROUND FLOOR PLAN
 SCALE: 3/16" = 1'-0"

THIS ARCHITECTURAL
 DRAWING PLUS ASSOCIATED
 FLOORPLANS ARE TO BE
 CONSIDERED AS PRELIMINARY
 OR WORKING DRAFTS, AS
 SUCH, ALL DIMENSIONS AND
 SPECIFICATIONS ARE
 APPROXIMATE AND SUBJECT
 TO CHANGE OR WITHDRAWAL
 WITHOUT NOTICE.

SHEET NO.
A-1
 OF 4 SHEETS

BEDROOMS: 4 ACTUAL, 6 POSSIBLE
 BATHROOMS: 4 FULL, 2 HALF
 LEVELS: 3
 TOTAL A/C LIVING AREA: 5,197 S.F.
 DIMENSIONS: WIDTH 63' X DEPTH 73'



THE DRIFTWOOD
THIRD FLOOR PLAN
SCALE: 3/16" = 1'-0"

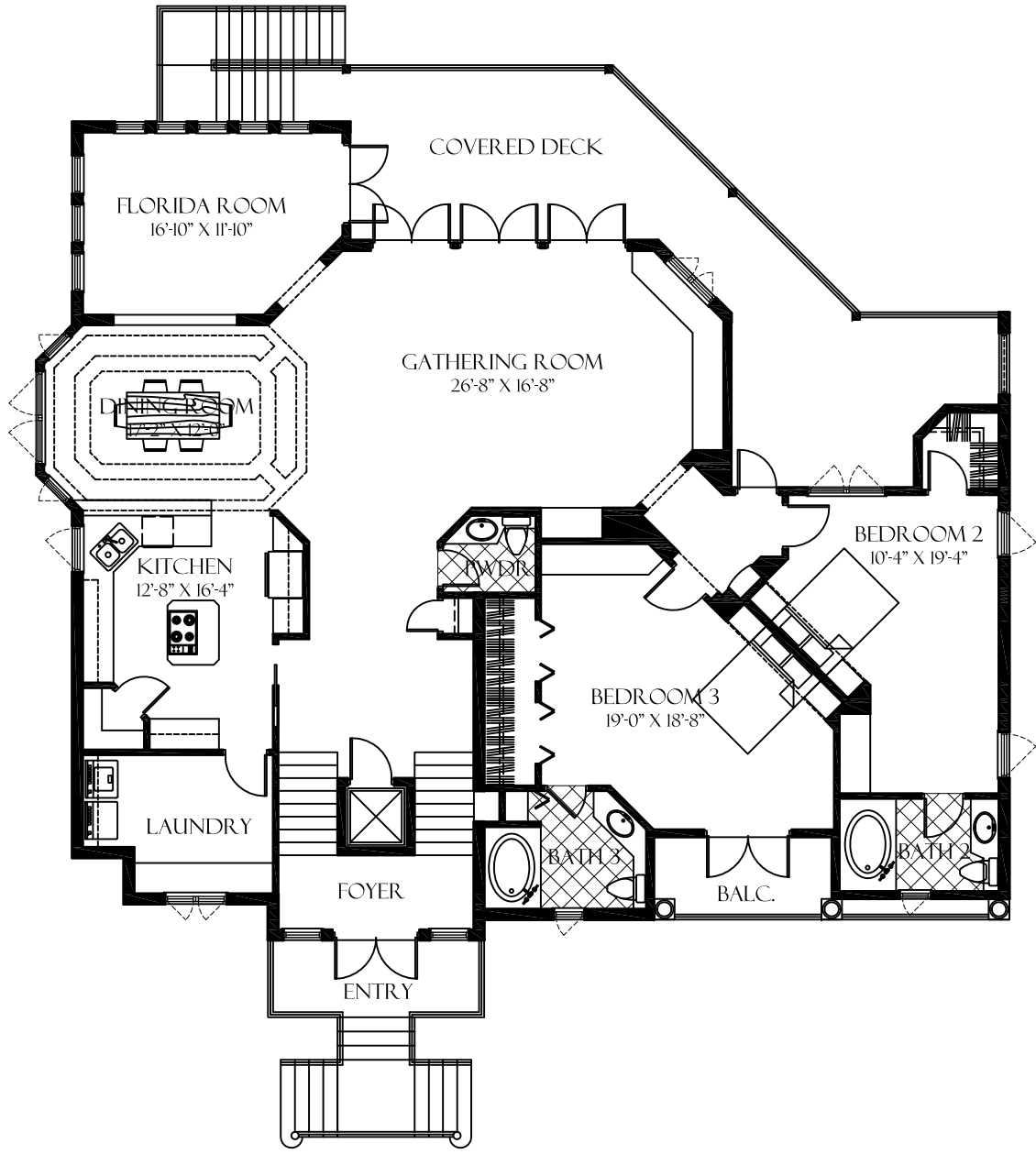
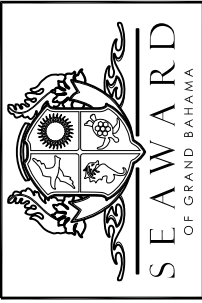
THIS ARCHITECTURAL
DRAWING PLUS ASSOCIATED
FLOORPLANS ARE TO BE
CONSIDERED AS PRELIMINARY
OR WORKING DRAFTS, AS
SUCH, ALL DIMENSIONS AND
SPECIFICATIONS ARE
APPROXIMATE AND SUBJECT
TO CHANGE OR WITHDRAWAL
WITHOUT NOTICE.

SHEET NO.

A-3

OF 4 SHEETS

BEDROOMS: 4 ACTUAL, 6 POSSIBLE
BATHROOMS: 4 FULL, 2 HALF
LEVELS: 3
TOTAL A/C LIVING AREA: 5,197 S.F.
DIMENSIONS: WIDTH 63' X DEPTH 73'



THE DRIFTWOOD
SECOND FLOOR PLAN

SCALE: 3/16" = 1'-0"

THIS ARCHITECTURAL DRAWING PLUS ASSOCIATED FLOORPLANS ARE TO BE CONSIDERED AS PRELIMINARY OR WORKING DRAFTS, AS SUCH, ALL DIMENSIONS AND SPECIFICATIONS ARE APPROXIMATE AND SUBJECT TO CHANGE OR WITHDRAWAL WITHOUT NOTICE.

BEDROOMS: 4 ACTUAL, 6 POSSIBLE
BATHROOMS: 4 FULL, 2 HALF
LEVELS: 3
TOTAL A/C LIVING AREA: 5,197 S.F.
DIMENSIONS: WIDTH 63' X DEPTH 73'

SHEET NO.
A-2
OF 4 SHEETS